



We create special places. We plant, care, inspire.  
We are a voice, a teacher, a steward.

June, 2017

## Volunteer Guide: Tree Care - Fancher Creek Parkway

**What:**

Tree Care along the Fancher Creek Parkway

**Where:**

Volunteers will meet at the trail crossing at 8am on the corner of Butler and Dewitt

A good Address to GPS is:

5556 East Butler Avenue

Fresno, California 93727

**When:**

Saturday, November 18<sup>th</sup> 8:00am – 11:00am

**What to Expect:**

Thank you for coming on out to Fancher Creek Parkway with Tree Fresno. It is a great opportunity to enjoy nature, get a little exercise, and give back to your community. Volunteer duties of the Parkway include pruning trees, picking up debris and clearing underbrush. The activity level is moderate.

**What to Wear:**

Please wear durable clothing, long sleeves, boots, and long pants are best when working around the branches and tall grass. Please wear work gloves, red ants bite, and nettle stings!

**What to Bring:**

Bring along a bottle of water or two.

**Registration Form:**

Please bring your Volunteer Registration Form if you have not previously turned one in.

**Safety First:**

**Watch for tripping hazards-** Such as fallen branches, holes and rocks. Step carefully- when working in tall grass and piles of debris. Be mindful of snakes and other wildlife that use these types of habitats.

**Be mindful** - When working in a group please be mindful of others when using tools. Group members will be sawing and pruning branches so be aware of who might be under you, or sawing above you.

**Stay hydrated** - Drink plenty of water especially on hot days or when physically exerting oneself. We will take rest breaks, but feel free to rest when needed.

**Be Respectful-** This is just a reminder to be respectful of others in the group and those passing by on the greenway. When working on projects with Tree Fresno, you are representing the organization and the community.

**Contact:**

Please contact Brianna Woodsford for more information



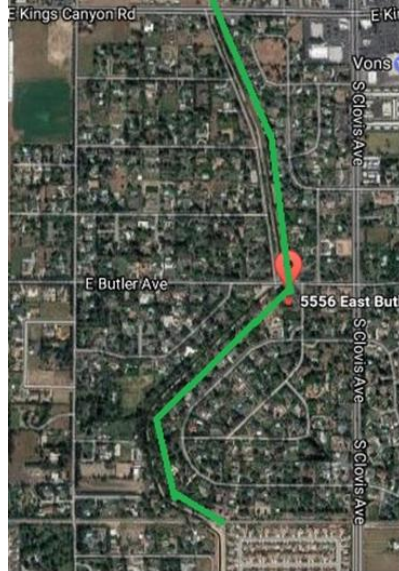
We create special places. We plant, care, inspire.  
We are a voice, a teacher, a steward.

(O) 559.221.5556

(M) 559.473.7682

(E) [brianna@treefresno.org](mailto:brianna@treefresno.org)

Maps:



#### **About The Fancher Creek Parkway:**

The Sunnyside Bridle easement was recorded with the Sunnyside subdivision map in the 1930's. At total of 1.3 miles, it is located along the east side of Fancher Creek from Kings Canyon Boulevard to the San Joaquin Railroad tracks and then east to Clovis Avenue. By the early 90s its use for horseback riding had greatly diminished and the trail became overgrown with vegetation. Tree Fresno was enlisted from time to time to prune the trees and clear the underbrush. People used the FID service road along Fancher Creek as a walkway. In the fall of 2012, Fresno County held a hearing at Ayer Elementary School to consider the abandonment of the easement. Over 95% of the residents at the hearing expressed the preference to keep the easement as a community asset. Tree Fresno subsequently entered into a Cooperative Agreement with Fresno County and the Sunnyside Homeowners Association to maintain and improve the easement for community use. The term "Fancher Creek Parkway" originated with the vision by Ed Kashian and Tom Richards, developers of the Fancher Creek Town Center, to create a greenway to the Kings River, in the tradition of the San Joaquin River Parkway. Our Tree Care work helps keep this dream alive.

#### **Valley Arboretum:**

The Valley Arboretum, a system of greenways, is becoming a signature amenity for the Fresno region. Adopted by reference in the 2014 General Plan, the San Joaquin River Parkway, Sugar Pine Trail, Old Town Clovis Trail, and the new Mid-Town Trail are notable components. Please join us in supporting a Special District to fund the care and development of greenways in our region.

Like [Tree Fresno](#) on Facebook for Volunteer Opportunities and Updates